

# OBRAS **PAC**

G.T. Espaço Físico  
Setembro de 2025

# OBRAS **PAC**

## DEMEC

### FICHA TÉCNICA:

📍 LOCAL: CAMPUS SÃO CARLOS

💰 VALOR: R\$ 2.008.532,00



## FOTOS



SITUAÇÃO





# OBRAS **PAC**

## PÓRTICO

### FICHA TÉCNICA:

📍 LOCAL: CAMPUS LAGOA DO SINO

🕒 INÍCIO DA OBRA: 21/02/2025

💰 VALOR: R\$ 564.450,02



## PROJETO

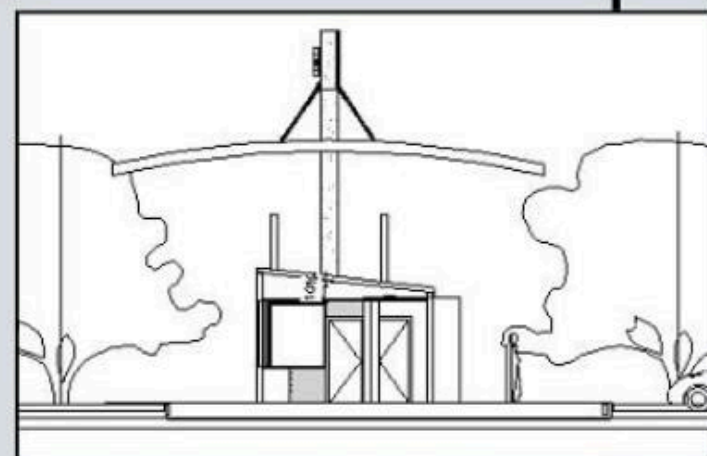


SITUAÇÃO

PÓRTICO



PLANTA



CORTE TRANSVERSAL



CORTE LONGITUDINAL





# PERSPECTIVAS PÓRTICO

SeGGT  
SECRETARIA GERAL DE GESTÃO DE SERVIÇOS





# OBRAS **PAC**

Se **UET**  
SECRETARIA GERAL DE GESTÃO DE ESPAÇOS

## CIVISA

### FICHA TÉCNICA:

📍 LOCAL: CAMPUS SÃO CARLOS

🕒 INÍCIO DA OBRA: 21/02/2025

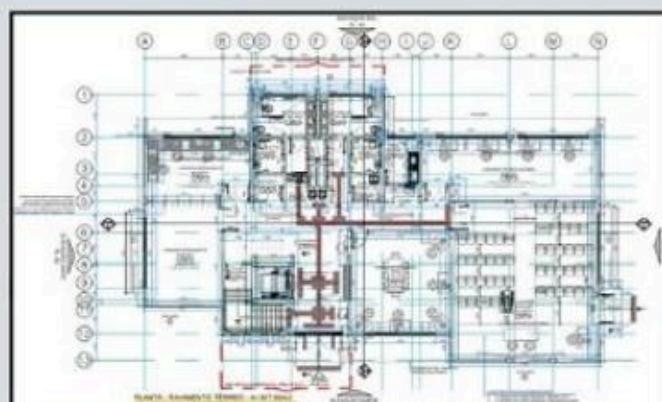
💰 VALOR: R\$ 2.663.766,02



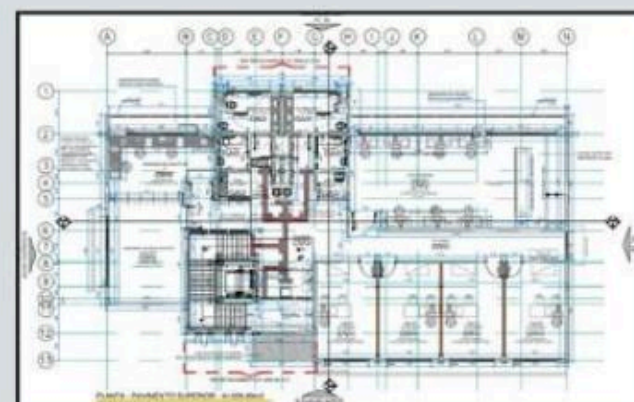
## PROJETO



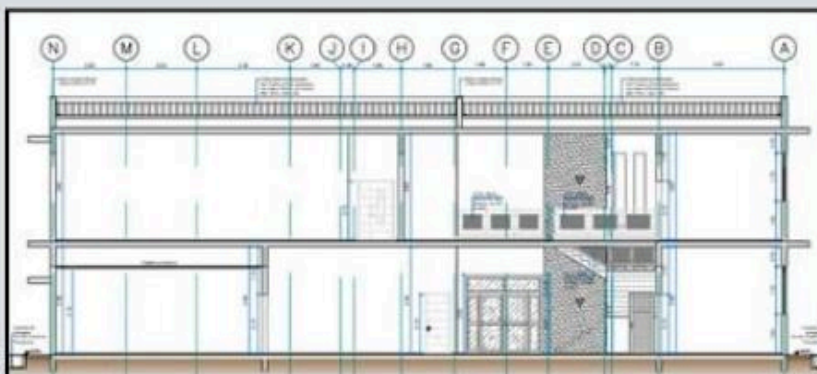
SITUAÇÃO



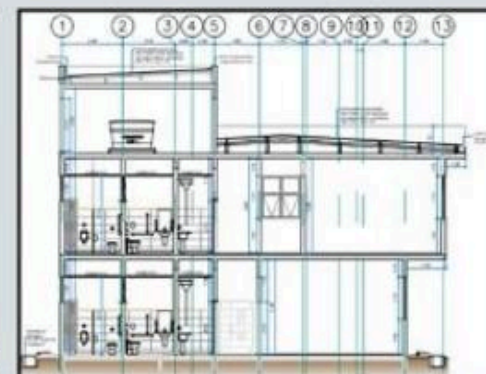
PLANTA TÉRREO



PLANTA SUPERIOR



CORTE LONGITUDINAL



CORTE TRANSVERSAL





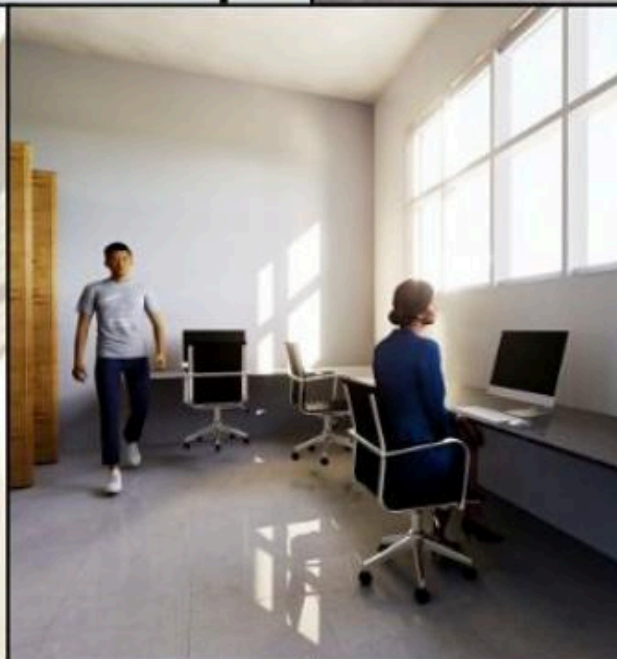
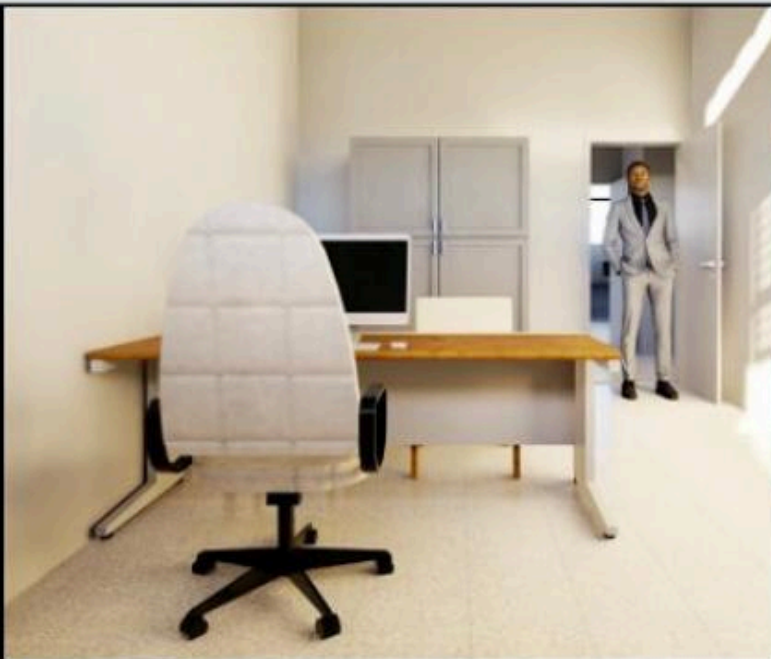
# PERSPECTIVAS EXTERNAS CIVISA

SeGTT  
Sociedade Geral de Serviços de Engenharia e Arquitetura





# PERSPECTIVAS INTERNAS CIVISA





OBRAS

PAC

TILSP

FICHA TÉCNICA:

📍 LOCAL: CAMPUS SÃO CARLOS

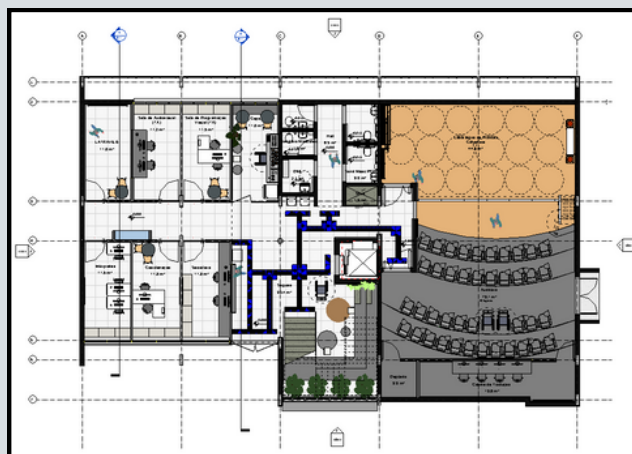
💰 VALOR: R\$ 5.168.430,81



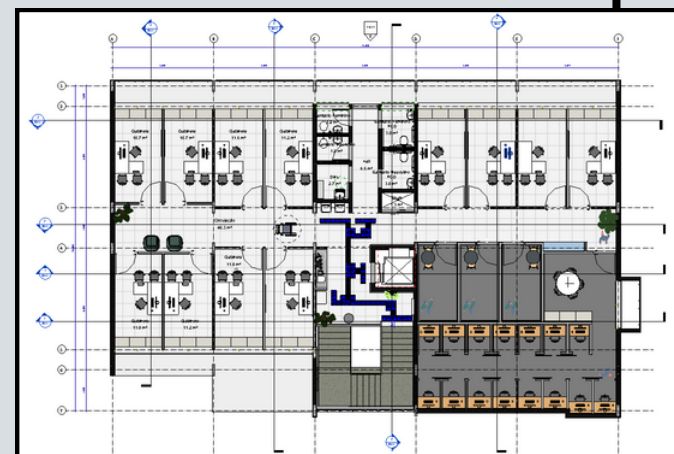
PROJETO



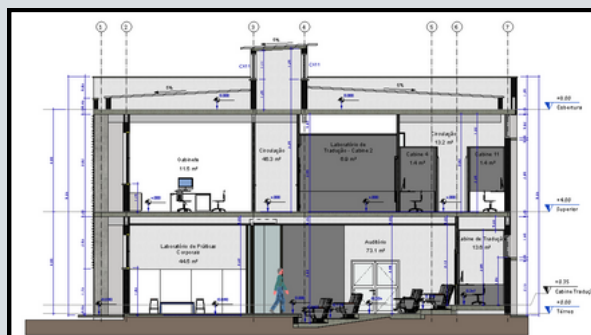
SITUAÇÃO



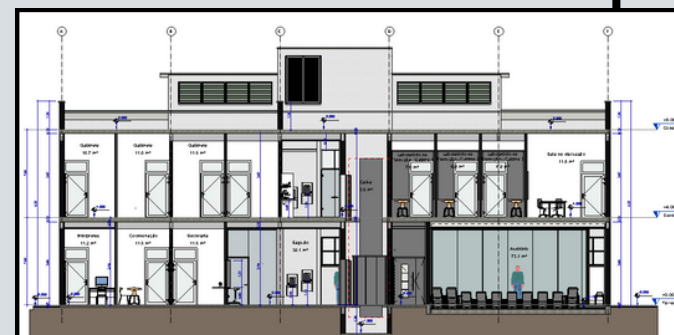
PLANTA TÉRREO



PLANTA SUPERIOR

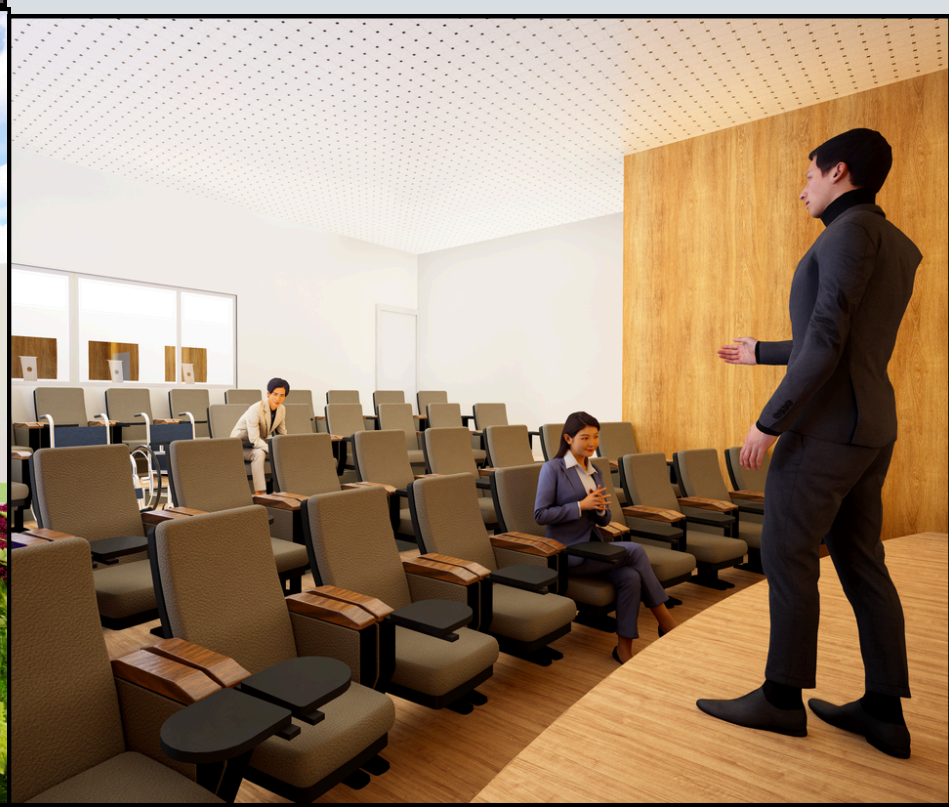


CORTE TRANSVERSAL



CORTE LONGITUDINAL









## FICHA TÉCNICA:

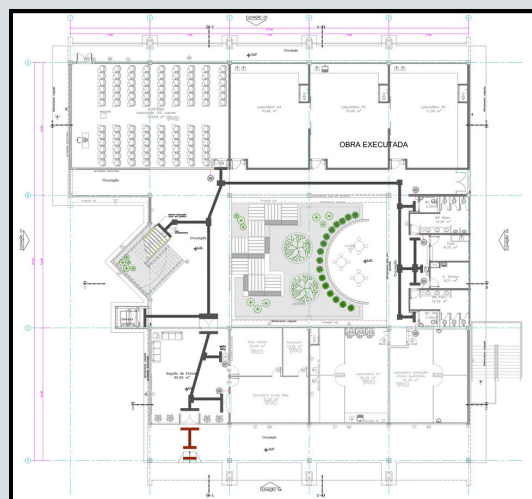
📍 LOCAL: CAMPUS SÃO CARLOS

💰 VALOR: R\$ 2.647.970,37

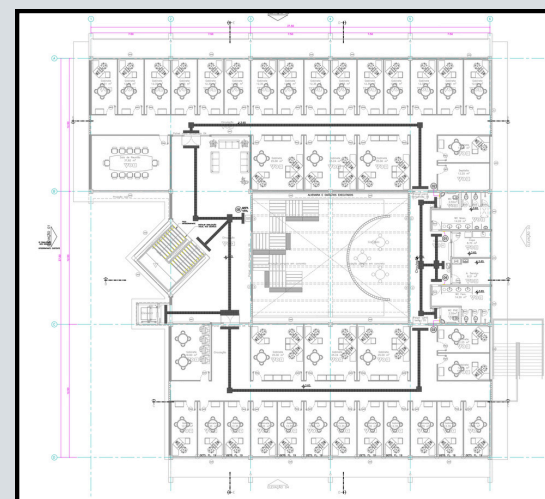
## PROJETO



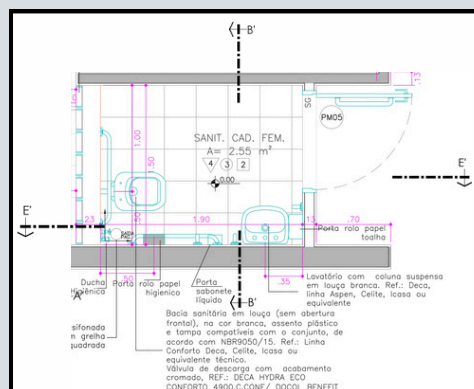
SITUAÇÃO



PLANTA TÉRREO- PISO TÁTIL



PLANTA PAV.01- PISO TÁTIL



PLANTA SANITÁRIOS ACESSÍVEIS



# OBRAS **PAC**

## **DAC**

### FICHA TÉCNICA:

📍 LOCAL: CAMPUS SÃO CARLOS

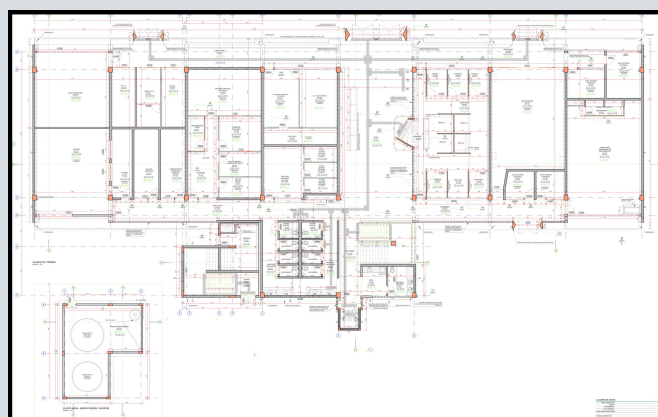
💰 VALOR: R\$ 11.494.228,11



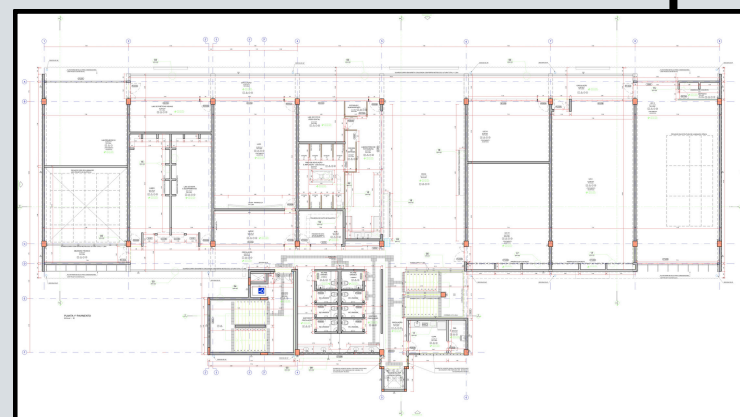
## PROJETO



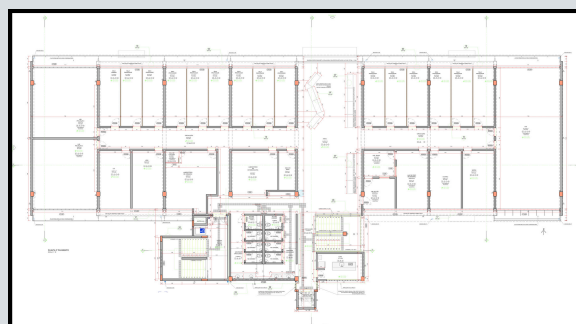
SITUAÇÃO



PLANTA TÉRREO



PLANTA PAV. 1



PLANTA PAV. 2



CORTES CC E DD







# OBRAS PAC

## INFRA ELÉTRICA

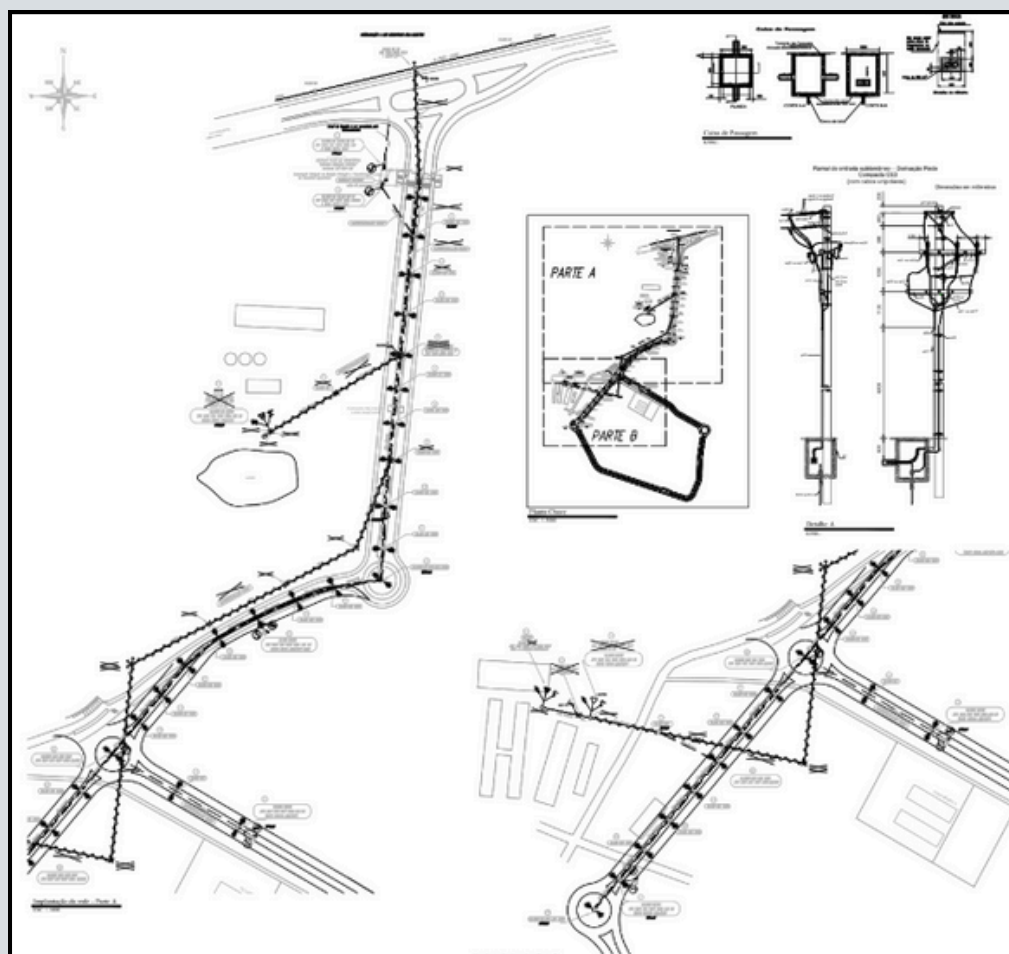
### FICHA TÉCNICA:

📍 LOCAL: CAMPUS LAGOA DO SINO

💰 VALOR: R\$ 1.000.000,00



## PROJETO E FOTO



IMPLANTAÇÕES DE REDE E PLANTA CHAVE



# OBRAS **PAC**

## R.U. SOROCABA

FICHA TÉCNICA:

📍 LOCAL: CAMPUS SOROCABA

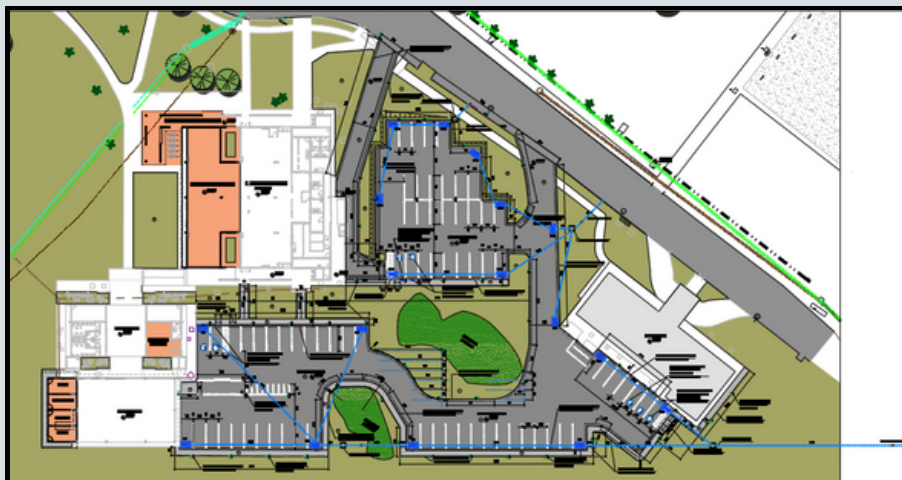
💰 VALOR: R\$ 3.096.750,41



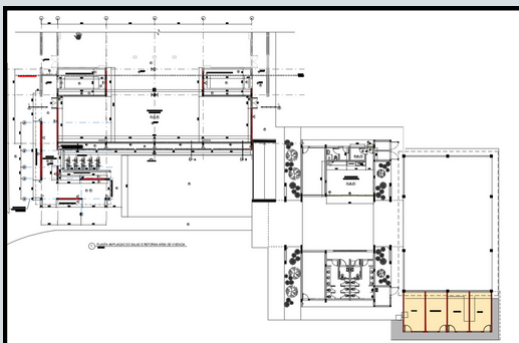
# PROJETO



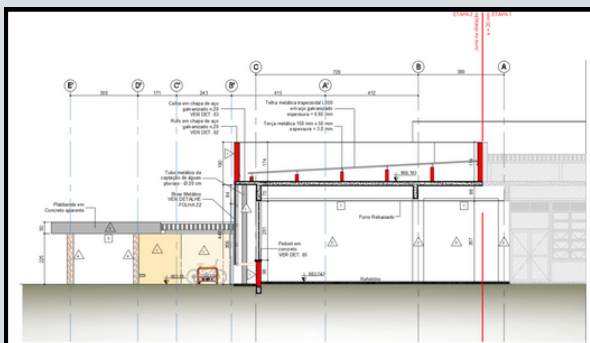
SITUAÇÃO



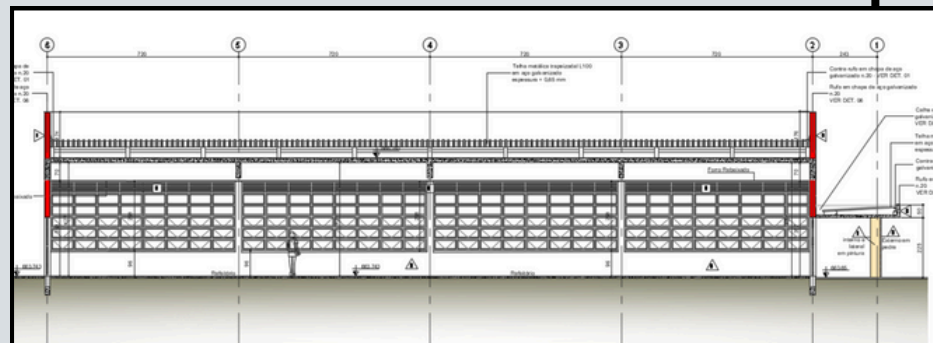
IMPLANTAÇÃO



PLANTA TÉRREO



CORTE TRANSVERSAL



CORTE LONGITUDINAL





# PERSPECTIVAS

## R.U.

## SOROCABA

SeGGT  
SECRETARIA GERAL DE GESTÃO DO ESPAÇO FÍSICO





# OBRAS **PAC** BIBLIOTECA



## FICHA TÉCNICA:

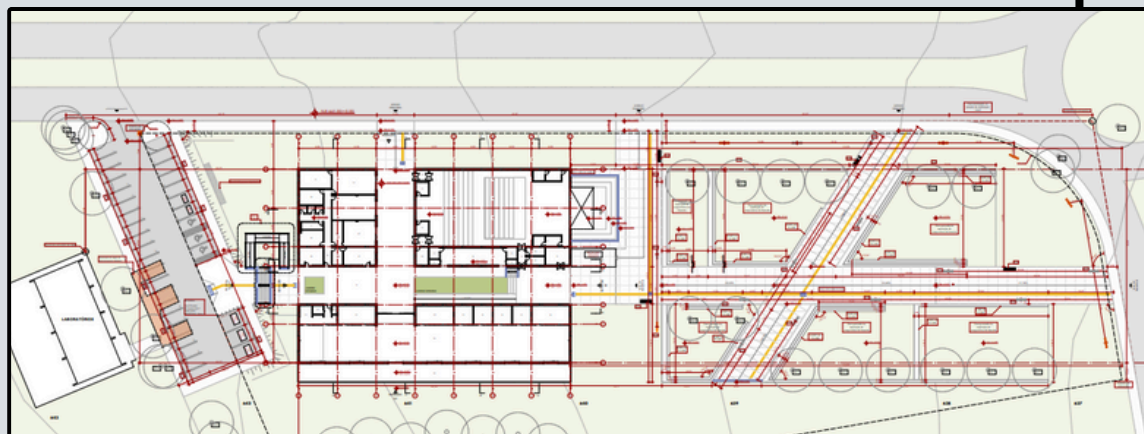
📍 LOCAL: CAMPUS LAGOA DO SINO

💰 VALOR: R\$ 11.000.000,00

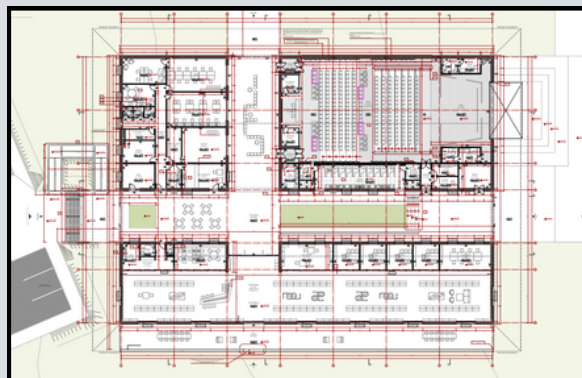
## PROJETO



SITUAÇÃO

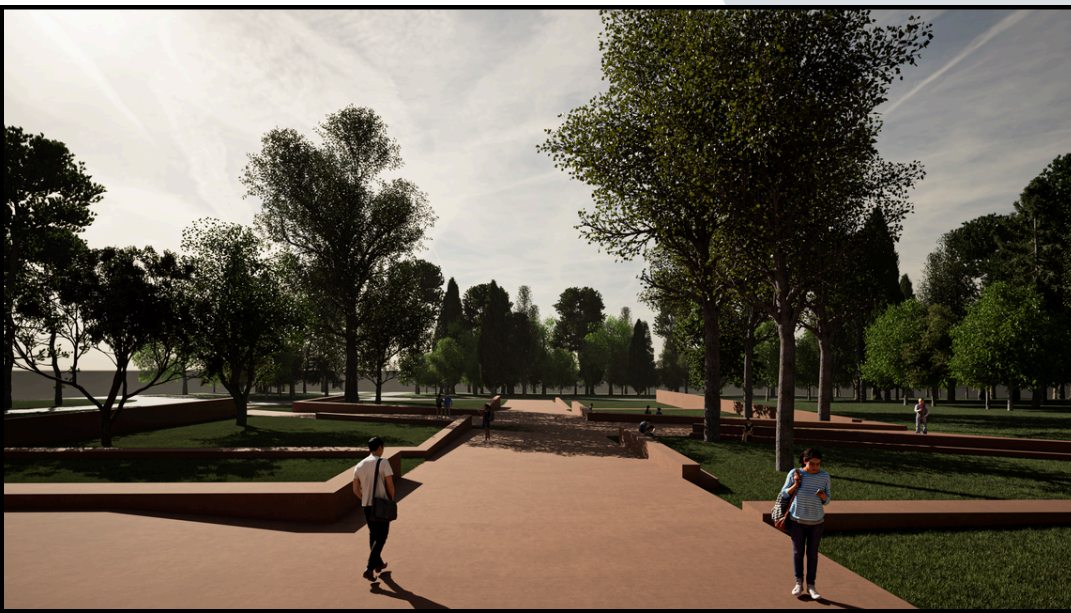


IMPLANTAÇÃO



PLANTA TÉRREO







# OBRIGADO!

G.T. Espaço Físico  
Setembro de 2025